

AE3100A~M Series 2-and 4-Wavelength Handheld OTDR

Key Features

- High performance OTDR for FTTx and RFoG networks
- 7", 800x480 LCD touchscreen places power and convenience at your fingertips
- Excellent short-distance performance with 0.8m event dead zone and 4m attenuation dead zone
- Dual- and quad-wavelength test options with broad dynamic range coverage (28 - 45dB and 24 - 43dB respectively)
- Minimum 5cm resolution
- Intelligent event analysis
- Excellent stability and repeatability
- "FiberPath" fiber link mapping mode
- Multiple options for your measurement needs, including: VFL, power meter, light source, and optical fiber microscope
- Complete user data ports: supports LAN, USB, SD, & more



Applications

Construction, deployment, maintenance, and authentication of the following networks:

- FTTx
- Long Haul Networks
- Passive Optical Networks (PON)
- Local Area Networks (LAN)
- Metropolitan Area Networks (MAN)

Overview

From Deviser Instruments' 4th generation of OTDR, the field-portable AE3100 marks a giant leap forward in fiber-optic measurement performance and utility. Single-mode models A through F can test the 1310nm and 1550nm wavelengths with dynamic range up to 45dB, while multimode models M through EM add quad-λ functionality at up to 43dB.

Featuring intuitive touchscreen controls and real-time data analysis, the AE3100 is the ideal test instrument for constructing, deploying, maintaining, and authenticating FTTx networks - as well as verifying access networks. Multiple models and configuration options ensure your unique measurement needs are covered.

Model Guide

Model	Mode	Wavelengths (nm)	Dynamic Range (dB)	Event Deadzone* (m)		Att. Deadzone* (m)	
				Single	Multi	Single	Multi
AE3100A	Single-mode	1310 / 1550 (± 20)	≥ 30 / 28	≤ 1.5	≤ 0.8	≤ 5.0	≤ 5.0
AE3100B			≥ 34 / 32	≤ 1.0		≤ 4.0	
AE3100C			≥ 36 / 34	≤ 0.8		≤ 3.0	
AE3100D			≥ 40 / 38			≤ 3.0	
AE3100E			≥ 43 / 41			≤ 3.0	
AE3100F			≥ 45 / 43			≤ 3.0	
AE3100M	Multimode	850 / 1300 (± 20)	≥ 24 / 26		≤ 0.8		
AE3100CM	SM / MM	850 / 1300 / 1310 / 1550 (± 20)	≥ 24 / 26 / 37 / 35	≤ 0.8	≤ 0.8	≤ 4.0	≤ 5.0
AE3100DM			≥ 24 / 26 / 40 / 38			≤ 3.0	
AE3100EM			≥ 24 / 26 / 43 / 41			≤ 3.0	

* At 25°C ± 5°C; 5ns pulse width; non-saturated reflective event; 5cm distance resolution.

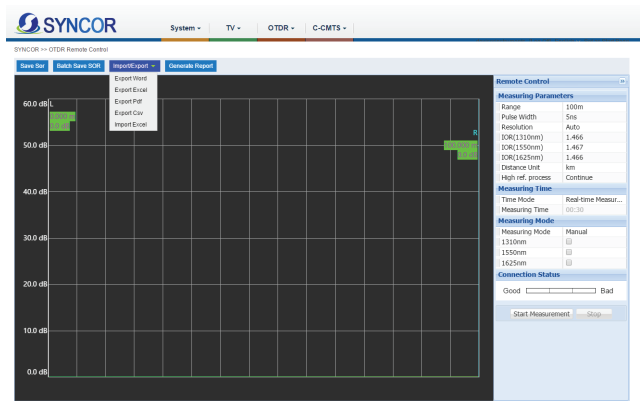
FiberPath™

FiberPath simplifies the interpretation of OTDR traces by identifying link elements and displaying the link map in an easy-to-understand format. Experienced and inexperienced technicians alike will appreciate the simplified display.



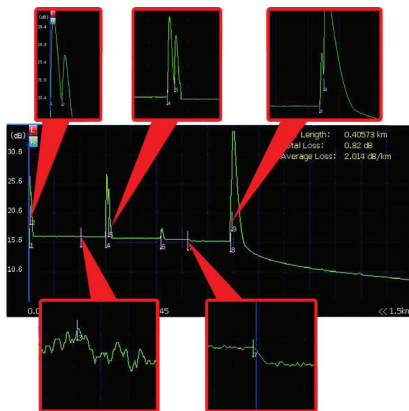
Remote Control

In conjunction with the SYNCOR PC-based asset and test data management system, users can issue test orders and collect measurement data remotely from AE3100 units deployed to the field.



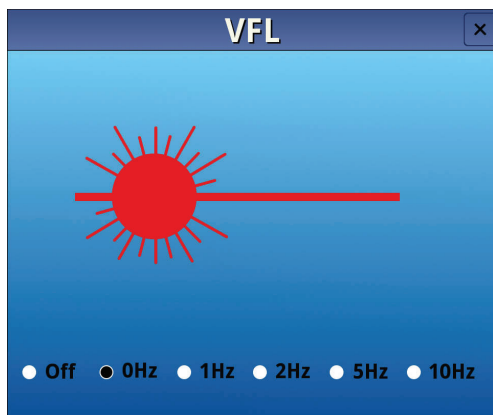
OTDR

This high-performing OTDR is the ideal solution for testing optical fiber in RFoG and FTTx applications. The OTDR can identify and locate link impairments and measure the insertion loss by LSA, 2Pt and 4Pt methods. The unit also measures optical return loss (ORL).



Optical Measurements

The AE3100 includes a suite of optical measurement tools, including a power meter, laser source, and visual fault locator (shown below). The unit is available in numerous wavelength configurations for ensuring proper levels in networks such as RFoG and FTTx.



Pictured: Visual Fault Locator (VFL) beam illuminates bends, splices, and faults in optical fibers, with an effective range of up to 10km.

Specifications

AE3100 Model		A	B	C	D	E	F	M	CM	DM	EM
General											
Wavelength Accuracy		± 20nm									
Event Dead Zone	SM	≤ 1.5m	≤ 1.0m	≤ 0.8m					≤ 0.8m		
	MM								≤ 0.8m		
Attenuation Dead Zone	SM	≤ 5.0m		≤ 4.0m	≤ 3.0m				≤ 4.0m	≤ 3.0m	
	MM								≤ 5.0m		
Measurement Range	SM	100m, 400m, 1.5km, 3km, 6km, 12km, 25km, 50km, 100km, 200km, 400km									
	MM								100m, 400m, 1.5km, 3km, 6km, 12km, 25km, 50km		
Pulse Width	SM	3ns, 5ns, 10 ns, 30 ns, 50 ns, 100 ns, 200 ns, 500 ns, 1µs, 2µs, 5µs, 10µs, 20µs									
	MM								5ns, 10 ns, 30 ns, 50 ns, 100 ns, 200 ns, 500 ns, 1µs		
Sampling Resolution		10cm ~ 12.8m		5cm ~ 12.8m				5cm ~ 6.4m			
Sampling Points		Up to 256,000									
Distance Accuracy (m)		± (0.75m + 0.005% x Distance + Sampling Res.)		± (0.75m + 0.001% x Distance + Sampling Resolution)				± (0.75m + 0.005% x Distance + Sampling Resolution)			
Group Refractive Index		1.30000 ~ 1.70000									
Linearity		0.05 dB/dB		0.03 dB/dB				0.05 dB/dB			
Loss Threshold		0.001dB									
Loss Resolution		0.001 dB									
Refresh Rate		4 fields/second									
Reflectance Accuracy		± 2dB									
Measurement Time Range		5s ~ 5min, real time									
Data Storage		Holds >80,000 OTDR traces, exportable to USB / SD card / computer									

Functions & Accessories				
Test Modes	Manual; Auto		File Format	Compatible with Bellcore GR 196 v1.1 (*.SOR)
Limit Settings	Manual; Auto		Loss Test Type	LSA, 2pt, 4pt
Limit Profiles	8 customizable profiles		UI Style	4 styles available
Distance Shift	Yes; display negative events		FiberPath Linear View	✓
Real-Time Testing	✓		Touchscreen Keyboard	✓
Self-Correcting	✓		Web Browser	✓
Online Help	✓		Auto Shutdown/Sleep	✓
Factory Reset	✓		Macrobending Test	✓
Multi-Lingual File Naming	✓		Dual/Quad-λ Testing	✓
Screenshots	✓		Multi-Trace Comparison	✓

Specifications (cont'd)

AE3100 Model		A / B	C / D / E / F	
Functions & Accessories (cont'd)				
Optical Power Meter	Calibration λ	1310 / 1550nm		
	Operating λ	850 / 980 / 1300 / 1310 / 1490 / 1550 / 1610nm		
	Range	Select from [-70 ~ +10dBm] or [-50 ~ +26dBm]		
	Resolution	± 0.17 dB		
Laser	Wavelength	1310 / 1550nm		
	Output Power	> -11dBm	> -4dBm	
	Modes	CW / 1kHz / 2kHz / 1kHz + Flash / 2kHz + Flash		
VFL	Wavelength	650 \pm 10nm		
	Power	10mW		
	Compliance	Laser Safety Class II		
USB FiberSpot Mode		Available by option only		
FiberPath		Available by option only		
Fiber Cleaning Pen		Up to 200 uses		
Remote Testing		Requires SYNCOR software configuration		
Cloud Asset Management		Requires SYNCOR software configuration		
Optical Port Type		PC (default); APC (optional)		
Optical Adapter Type		FC (default); SC, ST, LC, SC/APC (optional)		
AFEI400 Auto Fiber Endface Inspector				
Field of View	425 x 360 μ m	Compatibility	Use with AE3100, AE1000, or Windows PC	
Resolution	< 1.5 μ m	Magnification	400x	
Fault Size Detection	0.75 μ m	Camera	1.3 million megapixel, 1/2" CMOS	
Focus Range	± 1 mm (max ± 3 mm), auto-focus	Live Image	800 x 800, JPEG	
Light Source	Blue LED	Storage Temp.	-20 ~ +70°C	
Power Source	USB 2.0 port	Measure speed	< 1s	
Dimensions (HxWxL)	1.9" x 1.0" x 7.1" (47mm x 24.5mm x 181mm)	Weight	5.4oz (152g)	
General Specifications				
Display	7" 800x480 dot matrix TFT LCD touchscreen			
Interface	2x USB 2.0; 1x RJ45 LAN (10M/100M); 1x SD card slot (64GB max)			
Power	Supply	100 ~ 240V, 1.5A, 50~60Hz (AC); max 12V / 2Ah (DC); total max power 24 W		
	Consumption	< 3.5W		
Battery	7.4V / 5300mAh Li-ion battery, 39.22 Wh			
Operating Time	~ 11 hrs on full charge			
Languages	Chinese, English, Spanish, Portuguese, French, Russian, Italian (German, Korean, Arabic optional)			
Operating Temperature	-10°C ~ +50°C			
Storage Temperature	-40°C ~ +70°C			
Relative Humidity	0 ~ 95%, non-condensing			
Dimensions (LxWxH)	8.1" x 6.7" x 3.0" (206mm x 171mm x 75mm)			
Weight	< 4.4 lbs (< 2kg)			

Ordering Information

Included with all AE3100 Handheld OTDR Models:

- Visual Fault Locator, 650nm (10mW)
- Optical Light Source
- Li-Ion Battery & AC/DC Adapter
- Carrying Case & Stylus
- Optical Power Meter (select either [-70 ~ +10dBm] or [-50 ~ +26dBm])
- Calibration & Quality Certificates
- Quick Reference Guide
- Cleaning Swab
- CD with Instruction Manual
- PC Management Software
- FC/PC or APC Connectors

SKU No.	Wavelengths	Dynamic Range	Event Deadzone	Attenuation Deadzone
AE3100A (SM)	1310 / 1550nm	≥ 30 / 28dB	< 1.5m	< 5.0m
AE3100B (SM)	1310 / 1550nm	≥ 34 / 32dB	< 1.0m	< 5.0m
AE3100C (SM)	1310 / 1550nm	≥ 36 / 34dB	< 0.8m	< 4.0m
AE3100D (SM)	1310 / 1550nm	≥ 40 / 38dB	< 0.8m	< 3.0m
AE3100E (SM)	1310 / 1550nm	≥ 43 / 41dB	< 0.8m	< 3.0m
AE3100F (SM)	1310 / 1550nm	≥ 45 / 43dB	< 0.8m	< 3.0m
AE3100M (MM)	850 / 1300nm	≥ 24 / 26dB	< 0.8m	< 5.0m
AE3100CM (SM/MM)	850 / 1300 / 1310 / 1550nm	≥ 24 / 26 / 37 / 35dB	< 0.8m	< 4.0m / < 5.0m
AE3100DM (SM/MM)	850 / 1300 / 1310 / 1550nm	≥ 24 / 26 / 40 / 38dB	< 0.8m	< 3.0m / < 5.0m
AE3100EM (SM/MM)	850 / 1300 / 1310 / 1550nm	≥ 24 / 26 / 43 / 41dB	< 0.8m	< 3.0m / < 5.0m
FC/PC	FC Connector and PC Physical Type			
SC/APC	SC Connector and APC Physical Type			
AFEI400	Auto Fiber Endface Inspector & FiberSpot™ Inspection Software			
AE4000-801	FiberPath™ Link Mapper			
AE1000-009	150 Mbps USB Wi-fi Dongle		AE4000-737P	Fiber Cleaning Pen
AE1000-820	Remote Measurement		DS2400-703	2-Prong Power Cord plus Ground (Europe except UK)
AE4000-750	FC Connector		308-0022-01	3-Prong Power Cord plus Ground (US)
AE4000-753	SC Connector		DS2400-704	3-Prong Power Cord plus Ground (Australia)
AE4000-751	LC Connector		DS2400-705	3-Prong Power Cord plus Ground (UK)
AE4000-752	ST Connector			

©2018 Deviser Instruments Incorporated. 780 Montague Expressway, Suite 701, San Jose, CA 95131. All rights reserved. Specifications subject to change without notice. All product and company names are trademarks of their respective corporations. Deviser Instruments manufacturing facilities are ISO 9001 certified. Do not reproduce, redistribute, or repost without written permission from Deviser Instruments. AE3100 A~M 180827